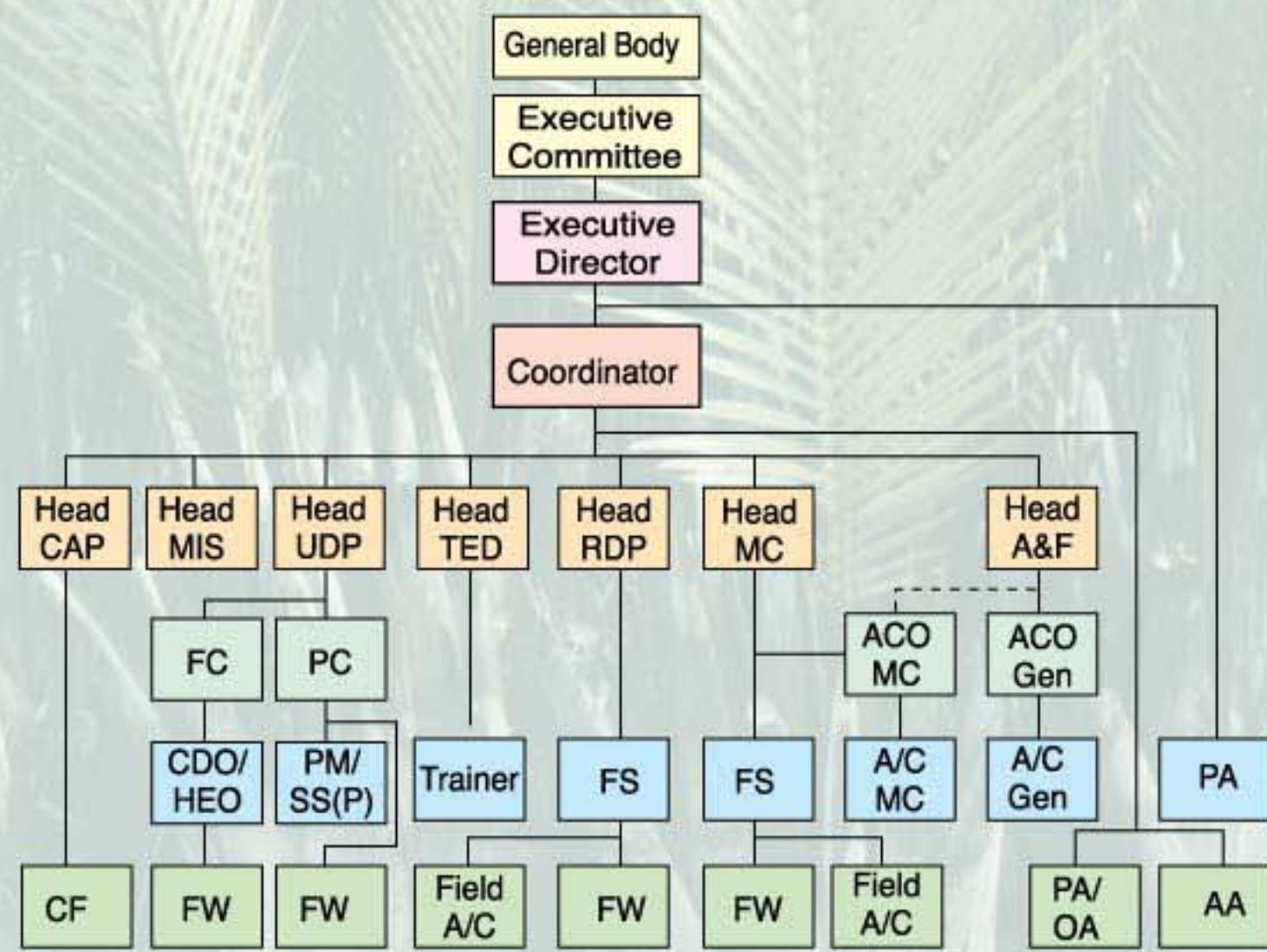


Donor / Partner	Program/Project
Bread for the World, Germany	Save Our Sundarban (SOS) Project
CAFOD, UK	Save Our Sundarban (SOS) Project
CARE Bangladesh	Reducing Vulnerability to Climate Change (RVCC) Project Developing a sustainable Solid Waste Management
Directorate of Women Affairs, GoB/BKB/ADB	Rural women Employment Creation Project (RWECP)
Forest Department, GoB	Forestry Sector Project/Green Belt Project
Manusher Jonno (CARE & Consortium members)	Ensuring Rights of the Poor Professional Workers Depended on Harvestable Resources of the Sundarban (PPN-MJ) Project
NGO Forum for DWSS	Village Sanitation Project
Pally Karma Sahayak Foundation (PKSF)	Micro Credit (MC) Program Financial Services for the Poorest (FSP) Project
Save the Children, UK	Working Children Development Program (WCDDP)
WaterAid, UK	Advancing Sustainable Health and Environment (ASEH) Project
Recently Completed Donor Projects	
BEMP, DoE, GoB	Support to Small NGOs for Solid Waste Management Project
BWDB, GoB/ADB	Khulna Jessore Drainage Rehabilitation Project (K-JDRP) Disaster Management Project SHAHAR Project Cage Aquaculture for Greater Economic Security Project Road Side Tree Plantation Project
CARE	Sundarban Bio-Diversity Conservation Project (SBCP) Postponed
Forest Department/ADB	NGO Gardening and Nutrition Education Surveillance Project
HKI	Municipal Solid Waste Management Project
SDC/RWGSWA-WB	Clinical Waste Management Project
SEMP, DoE, GoB/Prism'	

Organogram (Main Frame)



Legend

A&F = Accounts and Finance	FC = Field Coordinator	PC = Project Coordinator
ACO = Accounts Coordinator	FS = Field Supervisor	PA = Personal Assistant
A/C = Accountant	FW = Field Worker	PM = Project Manager
A/A = Administrative Assistant	Ge = General	RDP = Rural Development Program
CAP = Child & Advocacy Program	MIS = Management Information System	SS(P) = Sector Specialist, Program
CF = Child Facilitator	MC = Micro Credit	TED = Training and Education
CDO = Community Development Officer	O/A = Office Assistant	UDP = Urban Development Program

PRODIPAN OFFICES

Head Office
Shaheb Bari Road
Moheswarpasha, Daulatpur,
Khulna 9203 Bangladesh
Phone : 880-41-774777
Fax : 880-41-769477 Attn Prodipan
E-mail : pph@khulna.bangla.net

Liaison Office
3/5, Block-D, Lalmatia
Dhaka-1207
Bangladesh
Phone : 8114438, 8114847, 8118528
Fax : 880-2-8117663 Attn Prodipan
E-mail : prodipan@neksus.com

KHULNA DISTRICT

Modhupur Unit
Kolapatgali,
Terokhada, Khulna
RWEC Project
Dumuria Sadar
Dumuria, Khulna
SOS Project
College Road,
Achabhua, Chaina Bazar,
Dacope, Khulna
SOS Project
Kabar Khana Road
Paikgacha, Khulna
PPN-MJ Project
70, Farazi Para Main Road
Khulna 9100
Phone : 041-730108

BAGERHAT DISTRICT

SOS Project
Shaolabunia Road
Mongla, Bagerhat
SOS Project
P.O. : Rayanda Bazar
Sharonkhola, Bagerhat
Kachua Unit
Kachua
Bagerhat
Chitalmari Unit
Chitalmari
Bagerhat
JAMALPUR DISTRICT
River Bank Project
College Road
Dewanganj, Jamalpur
FSP Project
Bagharchar (Dangdhara)
Dewanganj, Jamalpur.

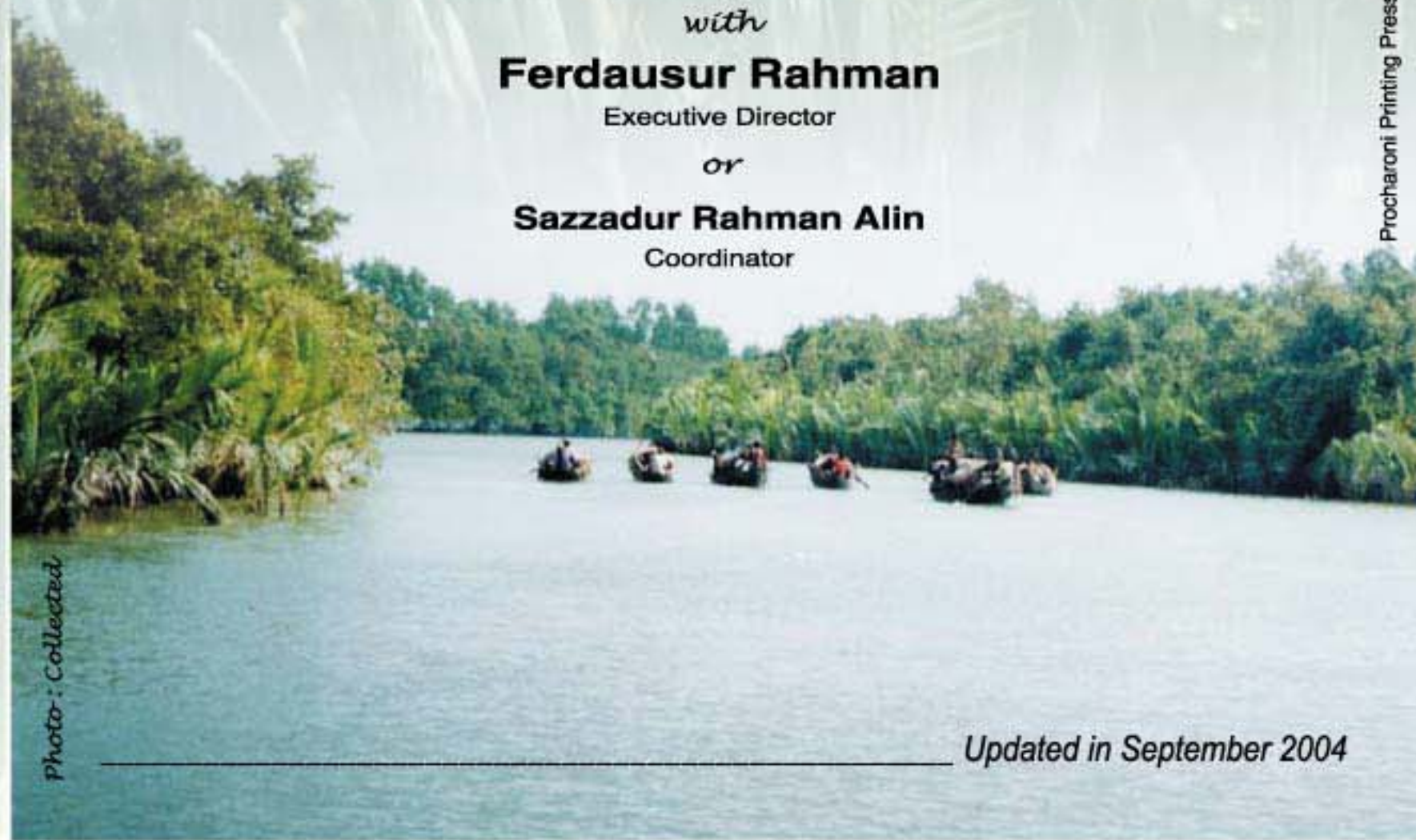
DHAKA DISTRICT

ASEH Project
3/5, Block D, Lalmatia
Dhaka-1207
Phone : 02-8114438
WCDDP Office
24 No, B. C. Das Street
Lalbagh, Dhaka
Phone : 02-9671931



...for more information, please communicate

with
Ferdausur Rahman
Executive Director
or
Sazzadur Rahman Alin
Coordinator



Updated in September 2004

Journey towards sustainability

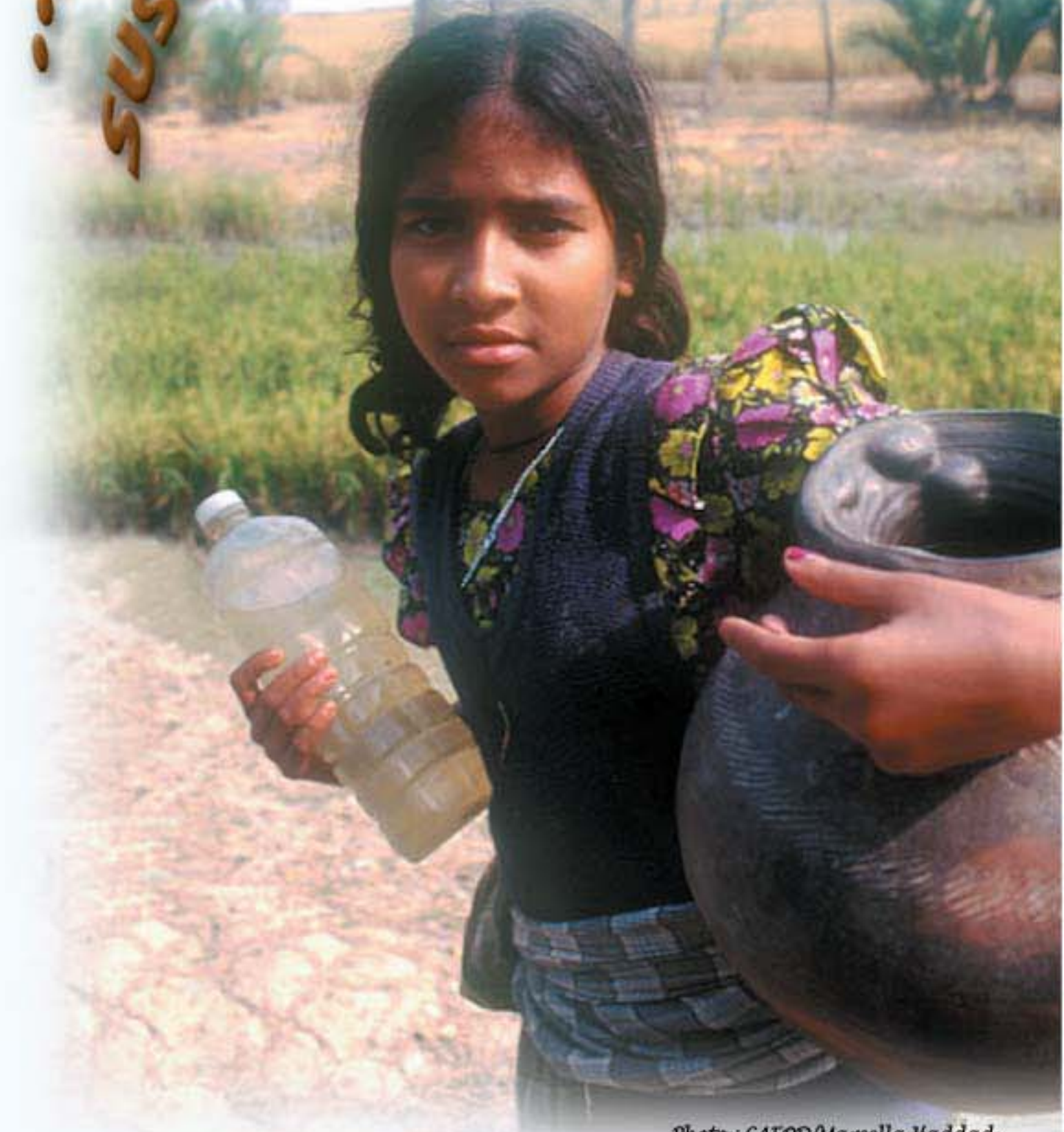


Photo : CAFOD/Marcella Haddad



Background

Prodipan was initiated in 1983 in the southwestern part of Bangladesh aiming to improve the socio-economic condition of the poor and underprivileged people and build up equity based social structure.

As a non-governmental organization, Prodipan conducts multi-lateral programs addressing a large community both in rural and urban areas of different parts of the country.

The development philosophy of Prodipan is essentially a holistic approach that emphasizes on the human resource development and empowerment of people through training and learning that facilitates the creation of people's institution and accelerates the activities of the institution. Its programs and interventions are devised with participatory process for the poor and their immediate needs. Prodipan is also committed to environment friendly development initiatives and gender institutionalization.

Vision

Prodipan's vision is defined as-
Improved quality of living of the poor in a sustainable manner.

Mission

To organize the poor and support their efforts towards human and economic empowerment with special emphasis on gender and environmental needs.

Legal Status

Registration Authority	No	Date
Department of Social Service, GoB	337	16 May 1984
NGO Affairs Bureau, GoB	290	08 April 1989
Last renewed on	290	08 April 2004

Policy & Decision Making Bodies

Following bodies formulate and implement Prodipan's policy and decisions at their respective levels:

General Body (GB), presently comprising of 21 members, guides policies and principles of the organization and approves yearly programs & budget. The GB of Prodipan is a permanent body with changes in membership.

Executive Committee (EC), comprising of 7 members, is the highest decision making body of Prodipan. By provision, the Secretary of EC is the Executive Director. The EC is elected by the GB for every two years.

The Executive Committee	
Mr. Zahid Hussain	President
Mr. Ranjit Datta	Vice President
Mr. Ferdausur Rahman	Secretary
Mr. Azizur Rahman	Treasurer
Ms. Farida Khanam	Member
Ms. Selina Begum	Member
Adv. Md. Liakat Ali	Member

Staff Forum is the staff level highest decision-making body comprising of the Executive Director, Coordinator and Section Heads.

Coordination Forum comprising of Executive Director, Coordinator, Section Heads and Field Supervisors/Project Coordinators, forwards field related decisions for final approval of the authority.

Gender Committee : A committee at central level, comprising of senior and mid-level staff, to scrutinize gender related issues at Policy level.

Geographical Coverage

Division	District	Upazila	Union/Ward	Village/Mohalla
06	09	32	119	984

Besides, short term or emergency service or consultancy based programs/projects are undertaken in any part of the country.

Alliances

Nationally: BSAF, CCHRB/BMSP, CDF, CUP, Child Rights Forum, Disaster Forum, DTF, GDF, Income Forum, SWIFT, VHSS, NIRAPAD.

Internationally: Child Workers in Asia, Asia E-Group, South Solidarity, SARC Citizens Conference, Hotline.

Guiding Policies

A very defined Constitution governs the organisation whereas different policies namely, Administrative Policy & Service Rule, Accounts Manual, Field Procedure, Savings & Credit Policy, Gender Policy, Training Manual etc. keep the organisation on track in consideration of its policies and principles.

Staff Strength

A very committed team shoulders the programs and projects undertaken by the organization. The organization offers the provision of both program and project staff which are treated as the fulltime staff; there are contract staff for training and technical purposes. Shown below the staff position as on June 2004:

Status	Professional			Service Staff			Total		
	Male	Female	Total	Male	Female	Total	Male	Female	Total
Fulltime	165	68	233	15	01	16	180	69	249
Contract	53	01	54	0	0	0	53	01	54
Total	218	69	287	15	01	16	233	70	303

PRODIPAN in Diversified Programs



PROGRAMS/PROJECTS

Core Program : People's Institution Building

PRODIPAN believes in poor people's organisation building for their empowerment. As a result, institution building is the foundation of Prodipan activities, which refers to a process whereby the empowered poor/hardcore poor men and women are organised into primary group comprising of 15-30 members on an average. The process starts at very grass-root level with primary group formation and ends up with forming higher structure i.e. union or upazila committee.

Support Programs to reach the immediate goal of Institution Building

i. Rural Development Programs/Projects

- Save Our Sundarban (SOS) projects in Dacope and Paikgacha (Khulna), Mongla and Sharonkhola (Bagerhat)
- Reducing Vulnerability to Climate Change (RVCC) project in Koyra (Khulna).

ii. Urban Development Programs/Projects

- Advancing Sustainable Environmental Health (ASEH) project in Tongi (Gazipur) and Narayanganj (Narayanganj)
- Municipal Solid Waste Management project in Khulna City (Khulna)
- Clinical Waste Management project in Khulna and Barisal
- Supporting Household Activities for Hygiene, Assets and Revenue (SHAHAR) project in Tongi (Gazipur).

iii. Self Sufficiency Program/Projects

- Micro-Credit Program in Koyra, Dumuria, Terokhada (Khulna), Kalia (Narail), Kachua, Chitalmari, Mollahat (Bagerhat)
- Rural Women Employment Creation Project (RWECP) in Dumuria (Khulna)
- River Bank Project (RBP) in Dewanganj (Jamalpur) and Fulsory (Gaibanda)
- Compost Generation from Municipal Solid Waste in Khulna.

iv. Other Support Programs/Projects

- Disaster Management Project (DMP) in Terokhada, Batiaghata, Dumuria, Paikgacha, Koyra (Khulna) and Shyamnagar, Ashasuni, Kaliganj (Satkhira)
- Developing a Sustainable Solid Waste Management in Jessore, Tongi (Gazipur) and Narayanganj Paurosava
- Support to Small NGOs in Solid Waste Management (Kishoreganj, Cox's Bazar, Sylhet, Rajshahi)
- Working Children Development Project (WCDDP) in Lalbagh (Dhaka), Natun Bazar (Khulna) and Koyra (Khulna)
- Forestry Sector project in Koyra (Khulna)
- Village Sanitation Program in Kalia (Narail), Modhupur, (Khulna) and Kachua (Bagerhat)
- Gender and Development in Kachua (Bagerhat).